

**SPECIALIST**

# KALP 45 BLUE-MAG · SENSOR

**EUROPE-VERSION**

230 VOLTS

**USA-VERSION**

110 VOLTS

**UK-VERSION**

110 VOLTS

20 8031 010

20 8031 020

20 8031 030

**Core drilling**

 Ø 15/32 to 1-49/64  
 12-45 mm

302-429, 448-462

**Twist drilling**

 Ø 15/64 to 5/8"  
 6-16 mm

462

 Only possible  
 with twist drill  
 Art. 20 1710

**Countersinking**

 Ø 3/8 to 1-3/16"  
 10-30 mm

610-645

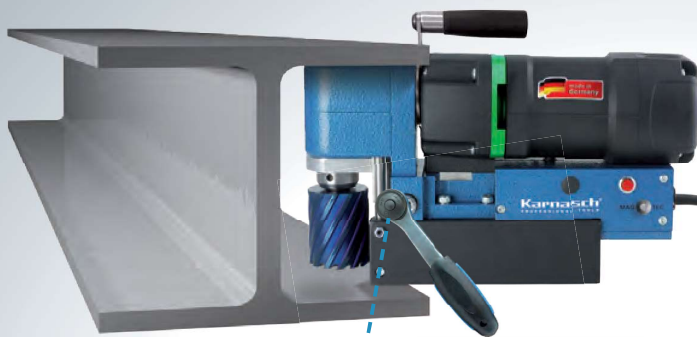
**Accessories**


463-465, 470

**Speed full load**


Gear stages

1 = 450 rpm

 The specified maximum diameter / cutting depths of the magnetic hole cutting machines, can only be guaranteed with **original** Karnasch drilling tools.

 Feed via ratchet lever. Changeable  
 for right and left hand operation.

 Machine rotates 360° possible.  
 Price on request

 Handle removeable /  
 moveable


7-1/16" [180 mm] Overall height

 3-9/16" [92 mm]  
 Overall width

12-13/64 [310 mm] Overall length

**BEST  
 SELLER**
**Special Characteristics**

**Sensor**
**Included Accessories**

- safety belt
- ratched
- hex keys
- aerosols

 Up to 2" (55 mm) cutting  
 depth can be achieved with  
 machine height of only 7-1/16"  
 (180 mm). Probably the  
 lowest machine with the  
 largest cutting depth on  
 the market.

Motor Power Watts

**1100**

Tool holder

Directly Weldon 3/4" (19 mm)

Coolant supply

Manual

Stroke

**2-1/2" | 63 mm**

Voltage

110 Volts / 230 Volts

Magnetic adhesion

**2645 lb | 1200 kg**

Magnetic foot

 3-3/8 ×  
 7-11/16"  
 (86 × 196 mm)

Fixed

Weight

**24.00 lb  
 11.00 kg**

Movie


**Bestseller**

1



2



3



4



5



6



7



8



9



10



11

Index